

# NC-8000

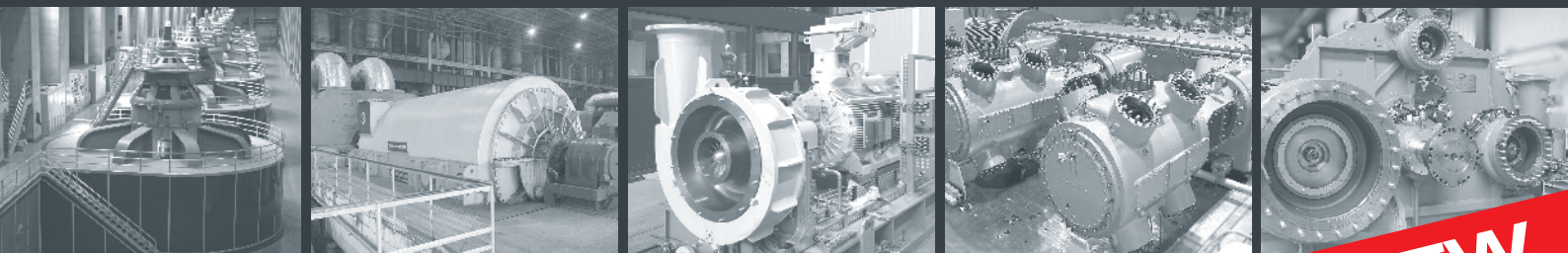
## PROXIMITY TRANSDUCER SYSTEM

### COMPOSITION

- NC-8000 Demodulator
- ST-NC/8 No-contact Probe
- CPT-NC/8 Extension Cable

### APPLICATION

- Eddy Current Non-contact Transducer
- Relative vibrations and axial displacements on machines with sleeve bearings
- Rotational speed on polar wheels
- Key phasor



**NEW**

RELATIVE VIBRATIONS, AXIAL DISPLACEMENT,  
KEY PHASOR MONITORING AND PROTECTION  
OF ROTATING MACHINERY

CE UK CA  SIL API 670

# CEMB

VIBRATION EQUIPMENT

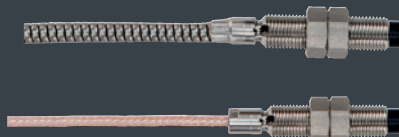
# PROXIMITY TRANSDUCER - MEASURING CHAIN

The three elements can be ordered separately in case of spare parts.

## PROXIMITOR NC-8000 Module



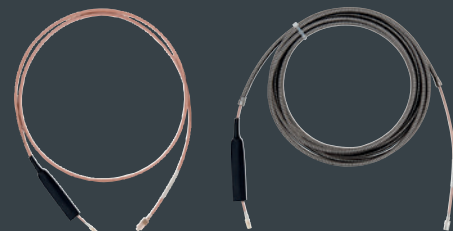
## PROBE WITH INTEGRATED CABLE ST-NC/8



## ST-NC/8RM Reverse Mount



## EXTENSION CABLE (OPTION) CPT-NC/8



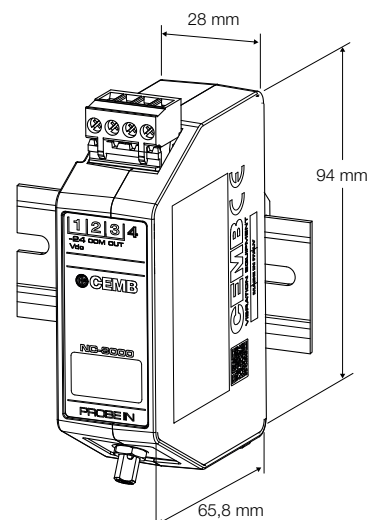
### TECHNICAL CHARACTERISTICS OF MEASURING CHAIN

NC-8000 Module	ST-NC/8	CPT-NC/8
Calibration Range 1m ÷ 9m	Total length Cable + Probe Body 0,5m ÷ 9m	Extension cable length 0,5m ÷ 8,5m
Environmental operating field (*) -40°C ÷ 80° - IP40	Campo di impiego ambientale (*) -55°C ÷ 180° - IP69K	Campo di impiego ambientale (*) -55°C ÷ 180° - IP65
External connections Removable screw terminal block Mini coaxial connector for probe	Cable type Standard coaxial or stainless steel armored cable	Cable type Standard coaxial or stainless steel armored cable
Target Material AISI 4140 (Default) - Other options	Oil resistance Yes	Oil resistance Yes
Body dimensions 28 x 94 x 66mm	Probe Body Length 40mm ÷ 220mm (INOX)	-

(\*) Per applicazioni IECEx o ATEX fare riferimento ai dati riportati sul certificato

### TECHNICAL CHARACTERISTICS OF NC-8000

Measurement Type	Relative vibration,, axial displacement, key phasor
Power Supply	-24Vdc nominal (-20 ÷ -30 Vdc range)
Output Signal	Analog (V)
Measuring Range	Standard ±1mm (0,5 ÷ 2 ,5mm) Special ±2mm (0,5 ÷ 4 ,5mm)
Nominal Sensitivity	Standard 7,87 mV/μm (200mV/mil) Special 3,98 mV/μm (100mV/mil)
Output Impedance	500 Ω
Linearity	±1% (Range 0,5 ÷ 2 ,5mm; T=100°C)
Dynamic Frequency Range	Frequency 0÷10 KHz
Storage Conditions	-60°C ÷ + 120°C without condensation



NC-8000 is fully compatible with the previous proximitors generation T-NC/8-API

## ORDER INFORMATION

### NC-8000/A/B/C/D

#### /A: Calibration Length

1: 1m  
 3: 3m  
 5: 5m  
 7: 7m  
 9: 9m


#### /B: Nominal Sensitivity

1: Standard 7.87mV/μm (200mV/mil)  
 2: Special 3.93mV/μm (100mV/mil)

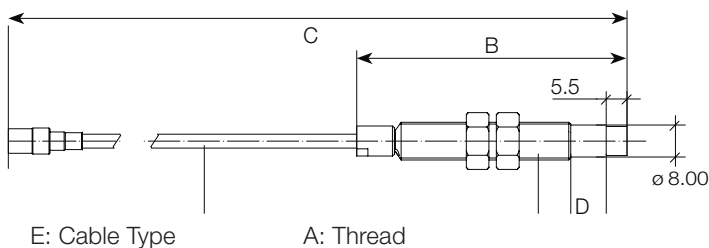
#### /C: Target Metal Type (\*)

1: AISI 4140	10: UNI 18CrNiMo
2: AISI 410	11: UNI 21CrMoV5-7
3: AISI 304	12: UNI 23CrMoNiWv88
4: AISI 630	13: UNI 26NiCrMoV14-5
5: C45	14: UNI 36NiCrD15
6: INCOLOY	15: UNI 36NiCrMo16
7: ER7T-ER8	16: DIN 1.4571
8: ASTM 276 SDX	17: DIN 1.4462
9: ASTM 668 UST-52-3	18: DIN 1.7225

#### /D: Certification

1: Standard  
 2:  II 1G Ex ia IIC T6,T5 Ga (ATEX)  
 3: Ex ia IIC T6,T5 Ga (IECEX)

### STANDARD PROBE – ST-NC/8



#### ST-NC/8/A/B/C/D/E

#### /A: Thread Type

0: M10x1  
 1: 3/8" -24 UNF

#### /B: Probe Body Length [mm]

Step 10mm – min. 40mm (4) – max. 220mm (22)  
 5: 50mm (standard)

#### /C: Total Length (Body + Cable) [mm]

Step 500mm – min. 500mm (5) – max. 9000mm (90)  
 0: 1000mm (standard)

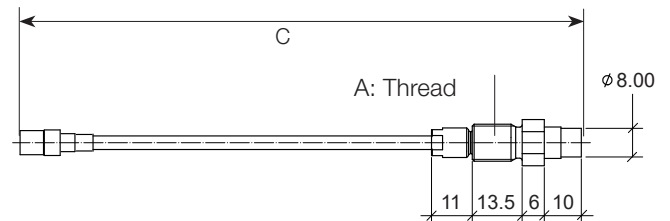
#### /D: Non-threaded Length (only for M10x1)

Step 10mm – min. 0mm (0) – max. 120mm (12)  
 0: 0mm (standard)

#### /E: Cable Armor

0: unarmored  
 1: armored

### REVERSE MOUNT PROBES – ST-NC/8RM



#### ST-NC/8RM/A/C

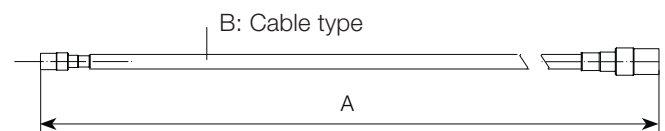
#### /A: Thread Type

0: M10x1  
 1: 3/8" -24 UNF

#### /C: Total Length (Body + Cable) [mm]

Step 500mm – min. 500mm (5) – max. 9000mm (90)  
 0: 1000mm (standard)

### EXTENSION CABLE - CPT-NC/8



#### CPT-NC/8/A/B

#### /A: Cable Length [mm]

Passo 500mm – minimo 1500mm (15) max. 8500 mm (85)  
 40: 4000mm (standard)

#### /B: Cable Armor

0: unarmored  
 1: armored

## OPTIONAL ACCESSORIES

### SR-6

Mechanical adapter for mounting NC-8000 proximity systems.  
Simple alignment of sensors on the rotor shaft.

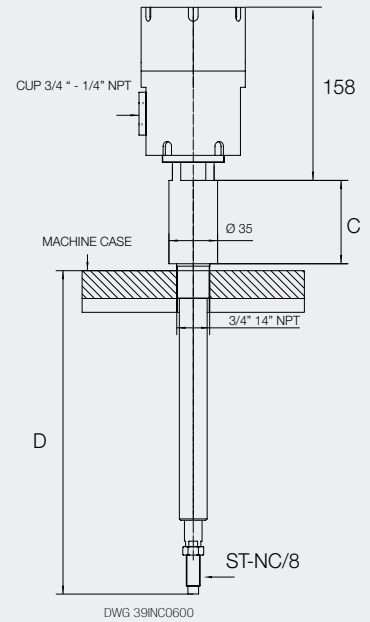
SR-6 /  /

#### /C: Mechanical adapter length

Step 1 mm – minimum 0 mm – maximum 225 mm

#### /D: Rod length [mm]

Step 5 mm – minimum 100 mm – maximum 750 mm



### SR-7

Mechanical adapter for mounting NC-8000 proximity systems.  
Simple alignment of sensors on the rotor shaft.

SR-7 /  /  /  /

#### /C: Mechanical adapter length

Step 10 mm – minimum 20 mm (20) – maximum 120 mm (120)

#### /D: Rod length [mm]

Step 10 mm – minimum 40 mm (40) – maximum 220 mm (220)

#### /E: Mechanical adapter threading

0: 3/4" -14 NPT

1: 1/2" -14 NPT

2: 1/2" GAS

5: M20x1,5

#### /F: Cable fitting

0: 3/4" -14 NPT

6: M16x1,5

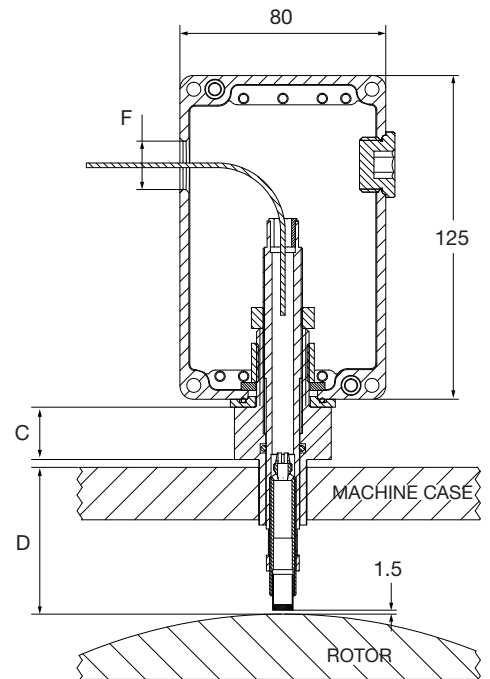
1: 1/2" -14 NPT

8: PG11

2: 1/2" GAS

9: PG9

5: M20x1,5



#### ZENER BARRIER Z896

(for classified area) cod. 800208896

#### GALVANIC BARRIER KFD2-VR4-EX1.26

(for classified area) cod. 800208980

#### PLASTIC TAG

B5MAG10 CY002

cod. 040STR000

#### STAINLESS STEEL TAG

B5MAG10 CY002

cod. 980710835