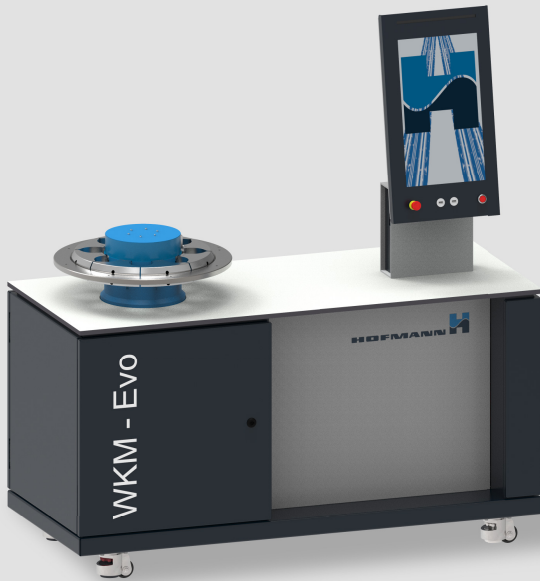




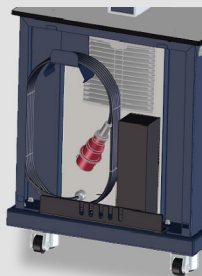
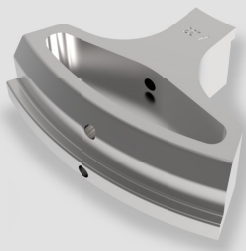
TIRE TECHNOLOGY EXPO 2023

WKM-Evo | ATG-Evo | Quiz

WKM-EVO

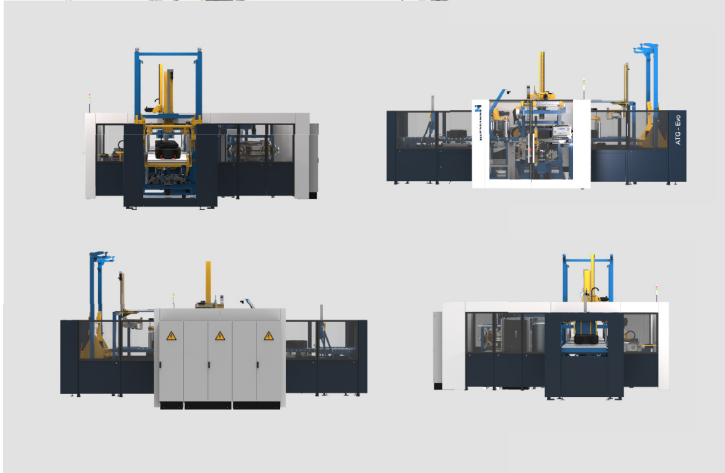
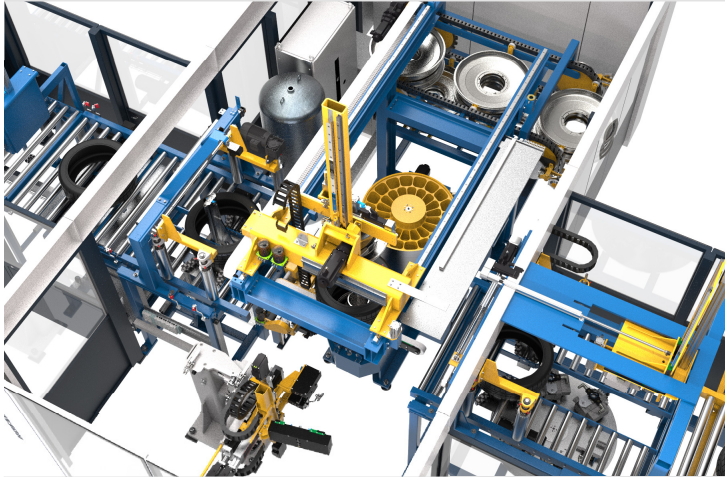
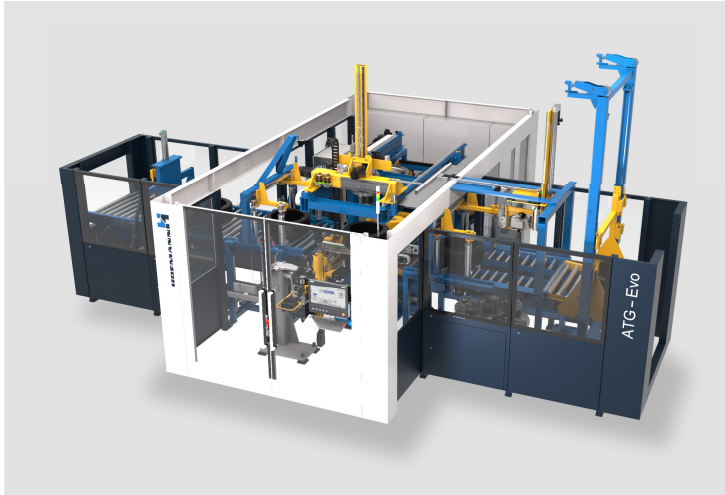


- New design for 12-30 inch
- First movable plug and play bead compression testing machine
- SQL database for measuring results
- Interface via XML
- Weight saving of 30% in machine, rim segments and zero rings
- Energy saving of 20% due to new electrical design
- No service technician necessary for recommissioning at customer site
- Electronic test speed setting from 5-60 mm/min
- Machine cover hood optional
- Professional tool storage optional



Our new
Design

ATG-EVO



- Flexible machine configuration due to modular design
- Autoteach, short set-up times for new test maps
- Maintenance works possible in automatic mode
- Identical rims for manual and automatic rim changing
- IIOT ready with SQL Database
- One piezo measuring system for TU and DB
- SLS geometry inspection with maximum 11 tracks
- 6-fold marking station
- Tool-free rim change
- Reduction of spare parts
- 30% lower energy consumption

Philosophy
by Hofmann

HISTORY

Our roots go back to 1931, when Hofmann was founded as a balancing technology specialist in Darmstadt. We have been located in Worms since 1997 and with more than 130 employees we are your premium partner for assembly, balancing and testing technology.

All our high quality measuring tools for our business segments Wheel Assembly Lines, Tire Industry, Balancing Technology and Balancing Service are manufactured in-house.

Within the last 5 years Hofmann focused on eleven new developments and their implementation in our products for Tire Industry, Wheel Assembly and Balancing.

Our quality management system takes into account all requirements of the DIN EN ISO 9001:2015 standard. Thus, we are ensuring the quality of our services and products. TISAX® and ISO 14001 certifications are in application.

Company representatives



Locations of Hofmann tire testing machines since 1997:

- 5 continents
- 27 countries
- 88 customers
- more than 200 tire testing machines

QUIZ

Win one of
our prizes!



<https://survey.lamapoll.de/Hofmann-Quiz/en>

1st: iPad
2nd: AirPods
3rd: LED Lenser M14

CONTACT US FOR FURTHER INFORMATION

E-Mail: michael.hierse@hofmannmaschinen.com

Hofmann Maschinen- und Anlagenbau GmbH

Altrheinstraße 11 Tel.: +49 6242 904-160

67550 Worms Fax: +49 6242 904-286

Germany

www.hofmannmaschinen.com

